



# MARVIN PATIO DOORS

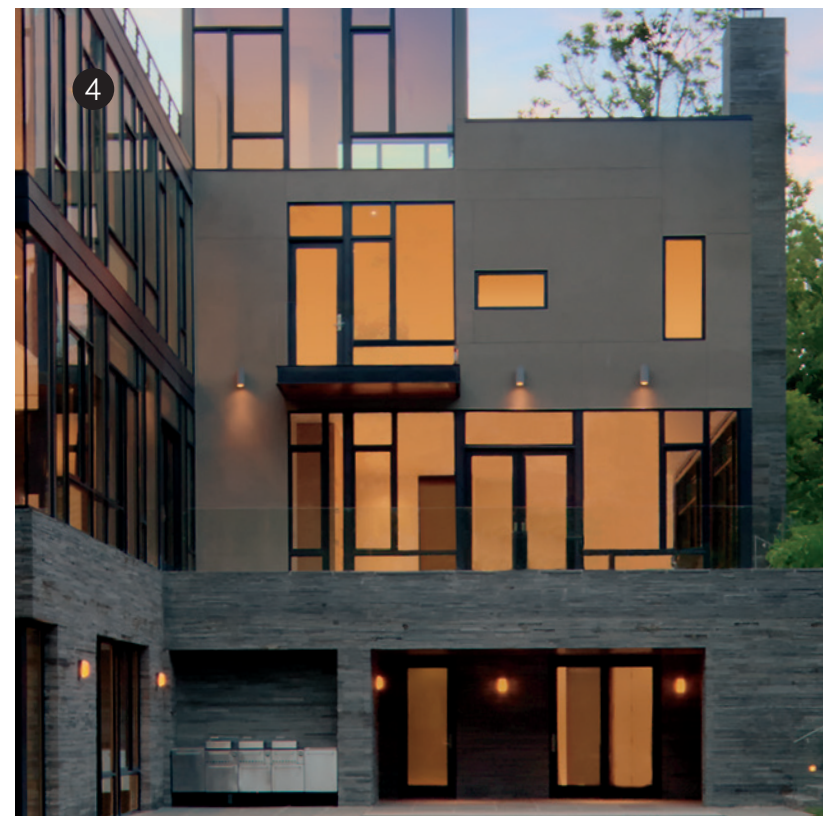
---

THE WAY TO QUALITY OUTDOOR LIVING

**MARVIN**   
Windows and Doors

Built around you.®

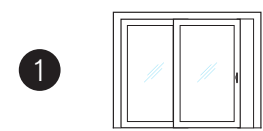




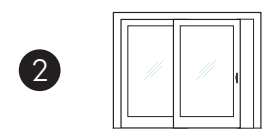
## MARVIN PATIO DOORS:

# PATIO DOORS THAT STEP OUTSIDE THE AVERAGE.

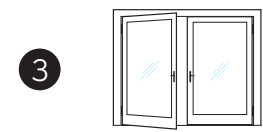
Today's homes are pushing the boundaries between indoor and outdoor living. Homeowners and architects prefer more glass, open views, ideal sun angles and easy, natural transitions to outdoor living spaces. Marvin® Patio Doors are sophisticated, beautiful door designs carefully built for smooth operation, dependable performance and remarkable views. Warm wood interiors invitingly frame the view and tough aluminum clad exteriors create an energy-efficient weather barrier. When you step out onto your deck, patio or outdoor hardscape area, your Marvin Patio Door will be an open and shut case for Marvin quality and unprecedented value.



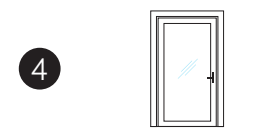
1 SLIDING PATIO DOORS  
*3" stiles and rails provide a modern look that maximizes your view.*



2 ULTIMATE SLIDING FRENCH DOORS  
*Traditional design with wide stiles and tall bottom rails.*



3 ULTIMATE SWINGING FRENCH DOORS  
*Super-tough Ultrex® sill, engineered for years of performance.*



4 CONTEMPORARY DOORS  
*Simple lines – 4 3/4" stiles and rails offer clean, uncluttered appearance.*





Architect: Surround Architecture

Features: Ultimate Sliding French Doors and  
Ultimate Swinging French Doors





## THE 8 MARVIN QUALITY POINTS

---

### EIGHT BUILT-IN REASONS TO BUY MARVIN QUALITY DOORS.

- 1** MORE STANDARD SIZE OPTIONS  
*Marvin® carries the most extensive portfolio of standard door sizes. It's more than likely standard - not a custom size - at Marvin.*
- 2** DESIGNED TO FIT YOUR VISION  
*Marvin allows you to customize doors to your unique project needs with a wide range of styles, configurations, glass, colors as well as divided lite options.*
- 3** FUNCTION YOU CAN FEEL  
*Marvin set the benchmark for smooth sliding doors with unique stainless steel rollers. Our swinging doors come standard with adjustable hinges that keep doors operating effortlessly for years.*
- 4** PREMIUM HARDWARE  
*Our standard hardware is designed with an ergonomic feel and elegant finishes. Architectural hardware options that make a bold, beautiful statement are also available.*
- 5** EXCELLENT QUALITY STANDARD SILLS  
*Ultrax® fiberglass sills are excellent thermal barriers. The optional low profile <sup>3</sup>/<sub>4</sub>" sill allows for smooth transitions that are great for universal design and accessibility.*
- 6** COMMITMENT TO INNOVATION  
*Marvin innovations like Interior Shades built with the same quality and craftsmanship as our doors help make these doors the best you can buy.*
- 7** CRAFTSMANSHIP AND MATERIALS  
*Concealed multi-point lock allows for a generous amount of wood with a superb fit and finish. Available with durable raised panels. Extruded aluminum cladding meets the toughest AAMA 2605 standard.*
- 8** COMMITMENT TO QUALITY  
*Unmatched Marvin quality down to the smallest details, handcrafted in America and backed by a 10/20 year warranty. We meet the customer's desire for quality in every detail.*





## MARVIN SLIDING PATIO DOORS:



## MAYBE THE MOST PLEASANT WAY EVER TO STEP OUTSIDE OF A HOUSE.

---

The transition to your outdoor space is more inviting through a Marvin® Sliding Patio Door. The look pulls you in, and the ease of operation begs you to slide outside. The 3" stiles and rails provide a modern look in two, three and four panel configurations. Completing the look are numerous architectural hardware options and even optional Interior Shades in 15 colors. This unit is available in sizes up to 12 feet wide and 9 feet tall, has up to an LC-PG40 performance grade rating and is ENERGY STAR® rated. Beyond the stellar design, it offers the sun, the moon and the stars.

◀ *Architect:* Christopher Simmonds Architect Inc.

Note: Maximum sizes may not be available in all configurations or listed Performance Grade Rating.





## MARVIN ULTIMATE SLIDING FRENCH DOORS:



## REAL LUXURY IS A VIEW THAT NEVER ENDS.

---

Stepping out on the deck to watch a sunset just became an even higher quality experience with our Ultimate Sliding French Doors. Traditional wide stiles and tall bottom rails frame your view like fine art featuring one of six high-quality wood options. The Ultimate Sliding French Door has numerous custom capabilities as well as a unique stainless steel roller system to ensure years of effortless operation. Available in two, three and four panel configurations in sizes up to 16 feet wide and 9 feet tall. It is ENERGY STAR® rated and offers up to a LC-PG40 performance grade rating along with breathtaking views.

◀ *Architect: Estes/Twombly Architects Inc.*

Note: Maximum sizes may not be available in all configurations or listed Performance Grade Rating.





## MARVIN ULTIMATE SWINGING FRENCH DOORS:



## THE FRENCH HAVE A WORD FOR OUR ULTIMATE SWINGING FRENCH DOORS: “WOW.”

Marvin® makes the Ultimate Swinging French Door a modern masterpiece of design flexibility. Whatever style fits your architecture, Inswing, Outswing or Arch Top, Marvin will build these doors with many size options and design combinations. Customize the door with a Square or Ogee interior profile, raised or flat panels and seamlessly integrated Interior Shades. Available in two, three and four panel configurations in sizes up to 14 feet wide and 9 feet tall with up to a LC-PG50 performance grade rating. That's the beauty of our Ultimate Swinging French Door. It's *Built around you*® and adds “voila” to any view.

◀ Architect: Shubin + Donaldson

Note: Maximum sizes may not be available in all configurations or listed Performance Grade Rating.





MARVIN CONTEMPORARY DOORS:



## CLEAN SIMPLE LINES DEMAND CLEAN SIMPLE DOORS.

---

The Marvin® Contemporary Door is helping bring to light the clear vision of contemporary architecture. For clean, crisp angles and sightlines that maximize views and sunlight, Marvin Contemporary Doors feature 4 3/4" narrow stiles and rails for more glass area. Square interior glazing beads and contemporary handles add to the clean look. Available in two, three and four panel configurations in sizes up to 14 feet wide and 9 feet tall with up to a LC-PG40 performance grade rating. Whatever your vision, these Marvin doors will help you see it through, simple as that.

◀ *Architect:* Robert Gurney Architect

Note: Maximum sizes may not be available in all configurations or listed Performance Grade Rating.





HARDWARE OPTIONS

BEAUTY IS IN THE DETAILS.

The craftsmanship of a Marvin® patio door is beautifully enhanced when you choose exactly the right hardware. Contemporary or traditional handle sets in a wide variety of finishes offer classic looks to fit any design statement.

HARDWARE FINISHES:



Satin Taupe    Dark Bronze    Polished Chrome    Satin Chrome    Satin Nickel<sup>PVD</sup>    Brass<sup>PVD</sup>    Antique Brass    White    Oil Rubbed Bronze    Oil Rubbed Bronze<sup>PVD</sup>    Matte Black

MARVIN STANDARD HARDWARE:



Traditional Swinging Handle    Contemporary Swinging Handle    Sliding Patio Handle    Ultimate Sliding French Handle    Contemporary Sliding Handle

ARCHITECTURAL HARDWARE:



See the complete line of architectural hardware at: [MarvinWindows.com/architecturalhardware](http://MarvinWindows.com/architecturalhardware)



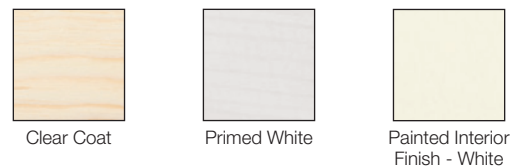
## MARVIN FINISH OPTIONS



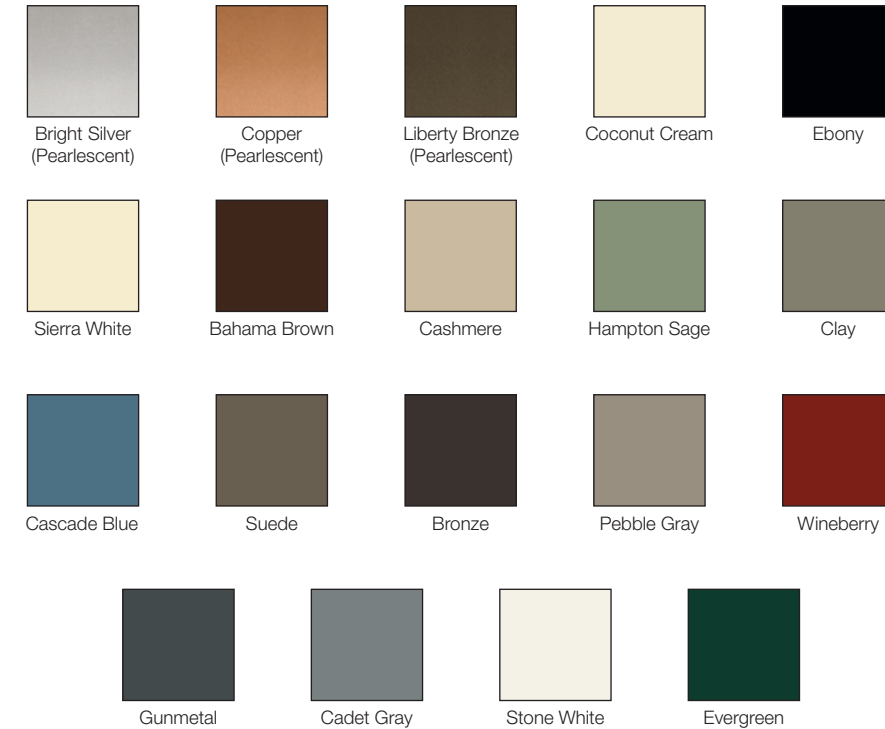
### SIX STAINS TO CHOOSE FROM, SO YOU CAN BEGIN WITH THE IDEAL FINISH.

Marvin® factory-applied interior finishes bring out the beautiful natural grain and texture of your wood windows and doors, and save you the time, hassle and mess of staining. Each finish is applied using a unique multi-step staining and conditioning process that ensures your windows and doors will look their best for years to come. With six deep, rich stains plus a clear coat, windows and doors have never looked this good.

#### OTHER FINISH OPTIONS:



## STANDARD CLAD COLORS



There's nothing standard about the 19 standard exterior cladding color option finishes. Marvin's extremely durable, extruded aluminum exterior cladding meets AAMA 2605, offers superior resistance to chalking and fading and is backed by a 20-year warranty.\* Marvin® uses high quality extruded aluminum cladding as standard on all clad products.

**ANY COLOR  
YOU WANT**

Check out [MarvinWindows.com](http://MarvinWindows.com) to learn more about our custom clad colors.

\* Some colors may not qualify for the 20-year warranty. For details contact your local dealer. For a copy of the warranty, see [MarvinWindows.com](http://MarvinWindows.com)





Architect: SALA Architects Inc.

Features: Ultimate Swinging French Doors

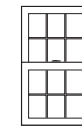




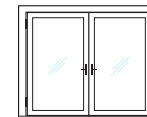
## THE MARVIN TOTAL PACKAGE

---

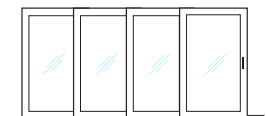
THE WAY TO COMPLETE THE VIEW  
HAS NEVER BEEN MORE COMPLETE.



MARVIN WINDOWS



MARVIN PATIO DOORS



MARVIN SCENIC DOORS

Marvin® quality crafted windows and doors are a stunning way to open up and pull together the look of an entire home. One source gives you windows in all sizes, patio doors in two, three or four panel configurations, and Scenic Doors in up to ten panels. There have never been so many quality design options to complete the look of your home.

◀ Architect: Davis Design Studio





## MARVIN PATIO DOORS

*The way to quality outdoor living has never been so warm and inviting. Marvin® patio doors are the epitome of quality and craftsmanship for those who design with outdoor transitions in mind. Find a dealer near you at [MarvinWindows.com](http://MarvinWindows.com).*



**Built around you.®**

©2016 Marvin Windows and Doors. All rights reserved. ®Registered trademark of Marvin Windows and Doors. Part# 19980508. October 2016.

Information regarding status of patent applications, and product features and specifications is subject to change without prior notice. Colors shown in printed materials are simulations and may not precisely duplicate product or finish colors. Contact your local Marvin dealer to view actual product and finish color samples.

HANDCRAFTED  
**IN AMERICA.** 